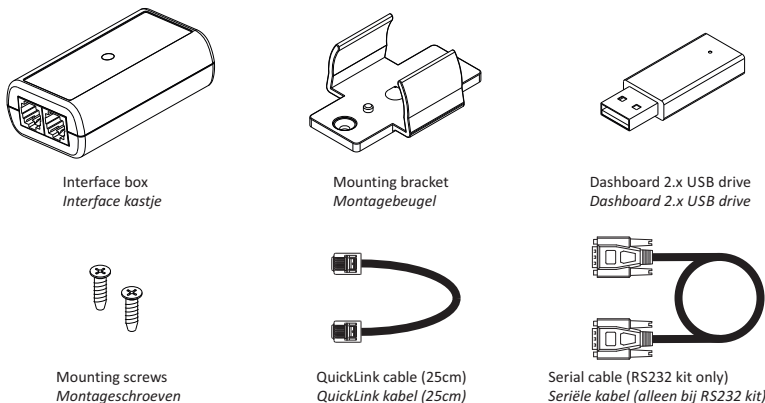


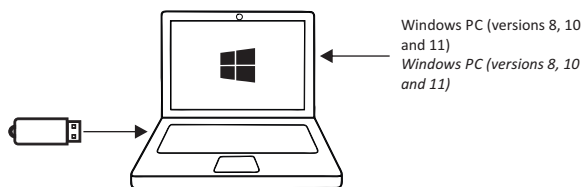
**EN** QuickLink to RS232 (#5092030) and QuickLink to USB (#5092130) interface kit installation guide

**NL** QuickLink to RS232 (#5092030) en QuickLink to USB (#5092130) interface kit installatie voorschriften

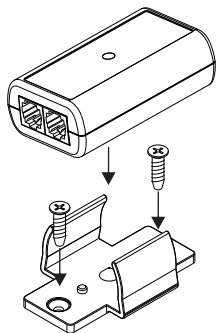
**1** Package contents  
*Inhoud verpakking*



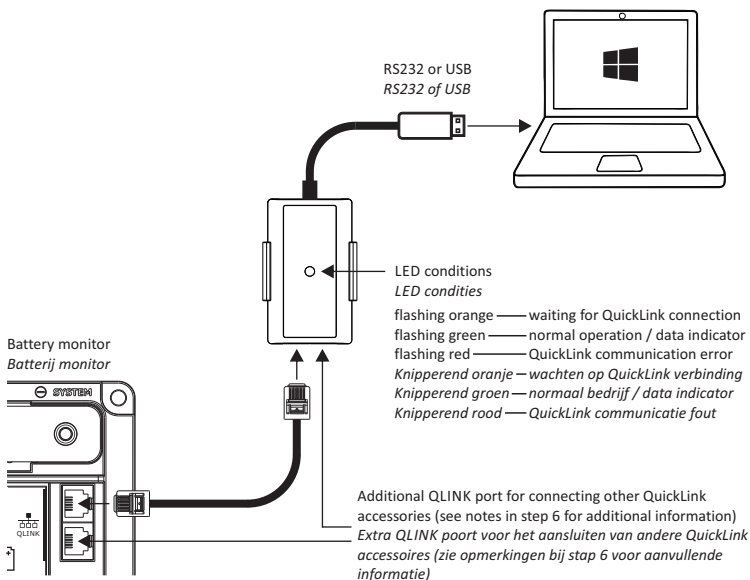
**2** Install Dashboard software + drivers  
*Installeer Dashboard software + drivers*



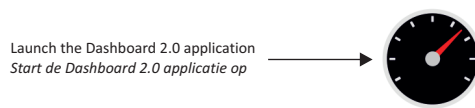
**3** Mounting the interface box  
*Montage van het interfacekastje*



**4** Connecting the interface box  
*Aansluiten van het interfacekastje*

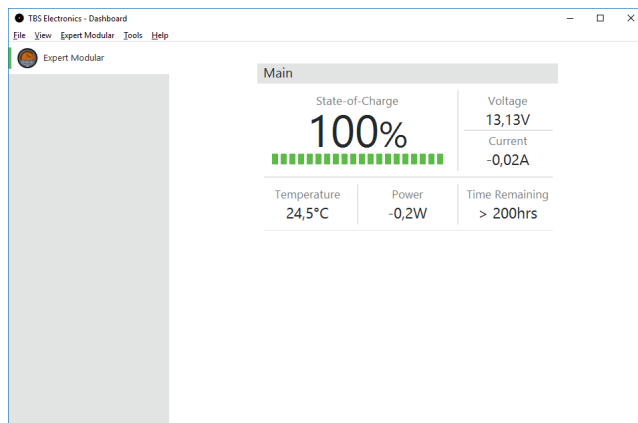


**5** Running the Dashboard software  
*Het starten van de Dashboard software*



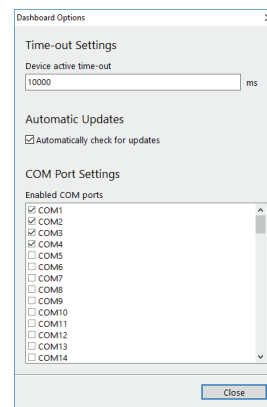
When the TBS device is connected to the computer and powered up, it should appear automatically in the device list on the left side (see below).

*Wanneer het TBS apparaat met de computer verbonden en ingeschakeld is, zou deze automatisch in de apparaten lijst aan de linkerkant moeten verschijnen (zie hieronder).*



When the TBS device does not appear while it is connected through RS232, you might need to allocate additional COM ports for Dashboard. You can find the setup window shown below under Tools → Options.

*Wanneer het TBS apparaat niet verschijnt in de lijst terwijl deze verbonden is via RS232, zouden er eventueel extra COM poorten moeten worden vrijgegeven voor Dashboard. Het onderstaande instellingen scherm kan worden gevonden in Tools → Options.*



**6** Specifications plus notes  
*Specificaties en opmerkingen*

Technical specifications isolated RS232 and USB interface boxes	
Communication bus type	TBS QuickLink
Current consumption	16.5mA max. (RS232) / 1.8mA max. (USB)
RS232 / USB cable length	RS232 = 1.8m / USB = 1.2m
Isolation value	1000Vrms for 3 sec.
Operating ambient temp.	-20 ... +50 °C
Dimensions (L x W x H)	74 x 43 x 25mm

Notes:

- Each QuickLink network may contain only one master device (i.e. battery monitor)
- Each QuickLink network may contain only one communication interface.

Opmerkingen:

- Elk QuickLink netwerk mag maar één master unit (bv. batterij monitor) bevatten
- Elk QuickLink netwerk mag maar één communicatie interface bevatten