

Control + Connect

One display,
infinite possibilities

Control

Seamlessly monitor and control your entire TBS Electronics energy system from one central display or remotely via the cloud. Designed for professionals and enthusiasts, the high-end 4-inch touch display offers unparalleled clarity and functionality.

Pair the Control display with our Connect Pro or Mini communication hub and effortlessly manage TBS inverters, battery chargers, and battery monitors. Whether you're optimizing your power setup or monitoring tank levels, Control provides real-time readouts and interactive control at your fingertips.

The seamless integration provided by the Connect communication hub allows you to not only readout vital information, but also control DC circuits, start generators, and transform your system into a fully automated powerhouse.

For those seeking a dedicated, premium battery status display solution, Control also connects directly to the Expert Modular and Compact battery monitors.

Crafted with excellence, Control is built using the finest components available to deliver an unmatched user experience and great performance. Its sleek, medical-grade anodized aluminum housing not only provides durability, but also ensures a premium feel that stands out in any setup.

The custom-made touch display offers vibrant colors, superb viewing angles and a chemically strengthened glass surface with an anti-fingerprint coating - making every interaction smooth, crisp, and smudge-free.

The modern and fluent user interface is thoughtfully designed with simplicity at its core, making it intuitive and easy to navigate for everyday users.

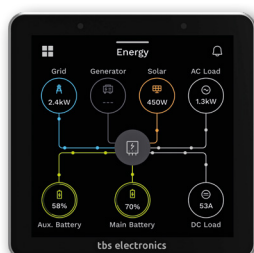
But for those who need deeper insights and advanced controls, more detailed system information is readily accessible at the touch of a button, offering the best of both worlds.

Beneath the surface, Control is powered by a high-performance, specially developed display system board that combines high performance with minimal current consumption - a critical feature for battery-powered systems.

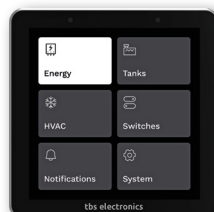
From monitoring your energy system and tank levels to managing DC circuits and integrating seamlessly with the Expert Expert battery monitor, Control adapts to your needs, providing both the simplicity and the depth of information you demand.

Control screen examples

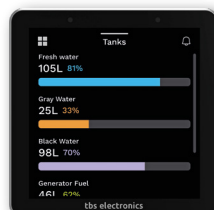
The image below shows the **Energy Flow** main screen that is processed by the Connect communication hub. Flow directions and energy levels of all sources and loads are animated by moving dots for optimal clarity.



Pressing a source/load 'bubble' will jump to a screen with more information.



The **Springboard** screen can be accessed by pressing the button in the upper left corner of any main screen. It is used to select a different main viewing screen or to access notifications or system settings.



The **Tanks** main screen clearly shows the levels of all available tanks that are wired to the Connect communication hub.



The **Switches** main screen is represented by a configurable grid of switches. These can be used to control all kinds of equipment that are connected via relays or future bus connected TBS digital switching devices.



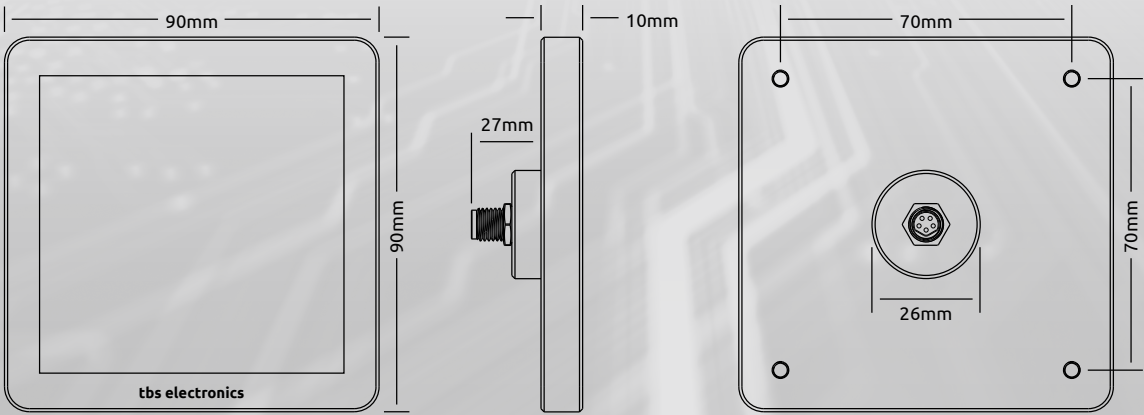
The **Main Battery Details** screen is an example to show what can be expected when a bubble is pressed in the Energy Flow screen, or when the Control is directly connected to an Expert Modular battery monitor.

Technical specifications

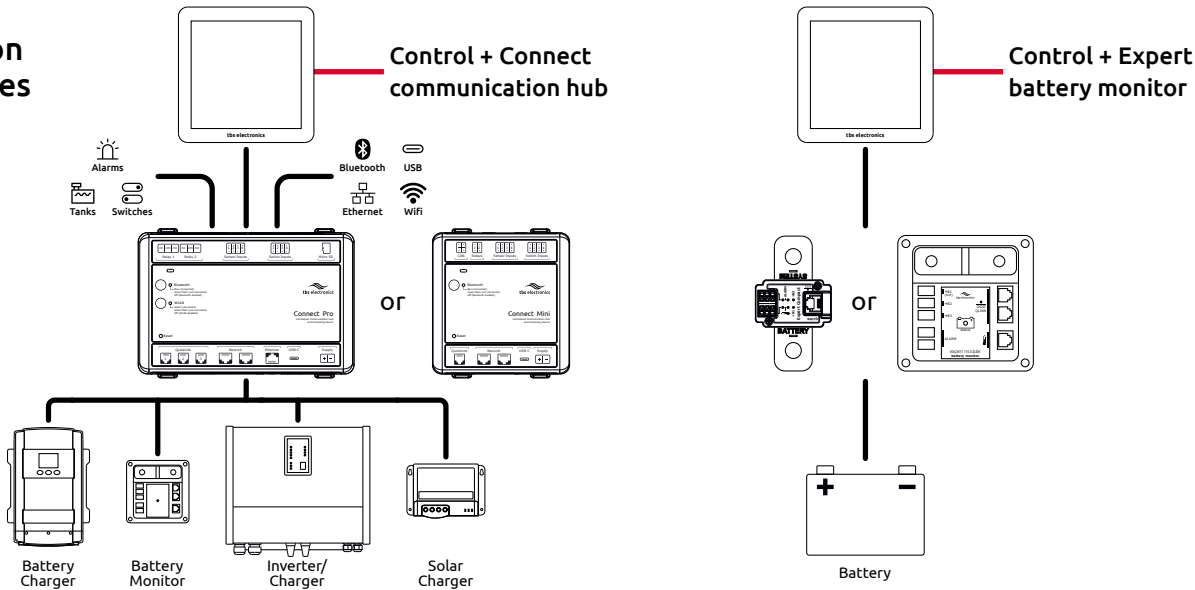
| Parameter | Control |
|-------------------------------|--|
| Supply | 8 - 17Vdc (powered by connected TBS device) |
| Current consumption (typical) | 9mA (standby) / 80mA (screen on) / 120mA (screen @ max. brightness) |
| Display | 480 x 480 pixels IPS panel, full touch, strengthened glass, anti-fingerprint |
| Housing material | Anodized aluminium |
| Housing color | Black or silver grey (other colors on request) |
| Communication port | TBS NexLink + TBS Quicklink (via M8 waterproof connector) |
| Weight | 140 grams |
| Protection class | IP65 |
| Dimensions (L x W x D) | 90 x 90 x 10mm (27mm total depth incl. connector) |

Note: the given specifications are subject to change without notice

Dimensions



Connection possibilities





Connect Pro and Mini

Connect is the intelligent communication and processing hub designed to be the beating heart of your TBS power system. It seamlessly gathers data from all connected TBS devices and routes it to the Control display, a PC via USB, or stores it locally on an SD card for data logging. Future updates will enable mobile app integration and cloud connectivity for remote monitoring (depending on model).

Connect doesn't stop at TBS devices. It features analog inputs for reading tank levels, external voltages, and temperatures. Multiple switch inputs allow external triggers to control device states, while the two standard available switch outputs can be activated by alarms or manually through the Control display's Switches screen.

Connect Pro

The Connect communication hub comes in two versions, Pro and Mini. The Pro model offers full connectivity and expandability. It is equipped with three QuickLink inputs, an Ethernet port, WiFi connectivity, NexLink time server (with battery-backed time and date) and an SD card slot.

Another stand-out feature is the expandability of the Pro, by providing two expansion slots for plug-in PCBs.

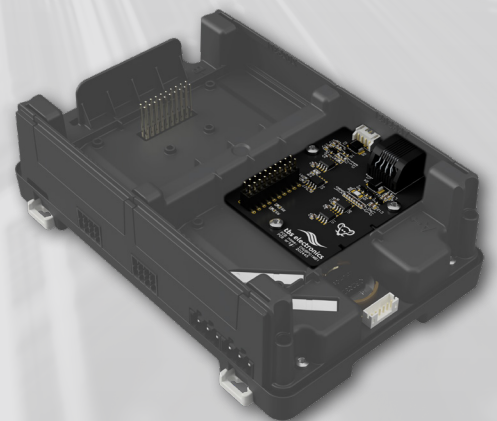
These expansion slots unlock virtually limitless possibilities, from adding more sensor- or switch interfaces to integrating third-party communication protocols or GPS. TBS will continue to release plug-in modules, making Connect Pro the ideal backbone for advanced electrical systems in vehicles, boats, solar installations, and industrial setups.

Connect Mini

Compact yet capable, the Mini shares much of the Pro's core functionality but omits cloud connectivity and expansion slots. It's a smart, space-saving solution for smaller systems that only require local access via the Control display or, in the future, a mobile app.

Connect Pro expansion slots

See the image below, showing one expansion slot populated with an additional interface PCB.



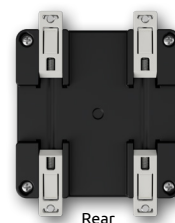
Flexible Installation with FlexMount™

Both Connect models feature the innovative FlexMount™ system, designed to simplify installation across a wide range of applications. Its adjustable mounting tabs allow for quick configuration, whether you prefer wall mounting or DIN rail integration, FlexMount adapts effortlessly to your setup.

Wall mounted



Front



Rear

DIN rail mounted



Front



Rear



Technical datasheet CTRCOND-EN-PREL

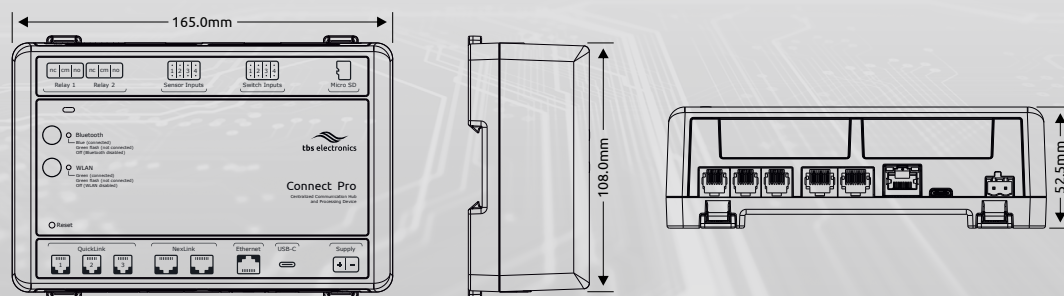
Control + Connect one display, infinite possibilities

Technical specifications and feature comparison

| Parameter | Connect Pro | Connect Mini |
|-------------------------------|---|---|
| Supply | 8 - 70Vdc | 8 - 70Vdc |
| Current consumption (typical) | TBD | TBD |
| Operating temperature | -25°C ... +60°C | -25°C ... +60°C |
| Dimensions (L x W x D) | 165.0 x 108.0 x 52.5mm (excl. connectors) | 105.0 x 108.0 x 33.5mm (excl. connectors) |
| Weight | TBD | TBD |
| Protection class | IP30 | IP30 |
| Indicators | On, Error, Bluetooth, WLAN | On, Error, Bluetooth |
| Communication interfaces | TBS QuickLink (3x), TBS NexLink, Ethernet, USB-C, Bluetooth, WLAN | TBS QuickLink (1x), TBS NexLink, USB-C, Bluetooth, Secondary CAN |
| NexLink bus supply source | Yes (2A max.) | Yes (1A max.) |
| Sensor (analog-) inputs | 4 inputs, configurable for voltage (0 - 35V) or resistance measurements (0 - 100KOhm) | 4 inputs, configurable for voltage (0 - 35V) or resistance measurements (0 - 100KOhm) |
| Switch (digital-) inputs | 4 inputs (> 3.0V = active and < 1.0V = inactive) | 4 inputs (> 3.0V = active and < 1.0V = inactive) |
| Programmable relays | 2 (SPDT, 6A / 35Vdc max.) | 2 (Solid-state, 0.5A / 35Vdc max.) |
| Plug-in expansions slots | Yes, 2 slots | No |
| MicroSD card slot | Yes | No |
| NexLink time server | Yes | No |

Note: the given specifications are subject to change without notice

Connect Pro global dimensions



Connect Mini global dimensions

